

**Liverpool Women's NHS
 Foundation Trust**

Menopause Primary care Collaboration pilot

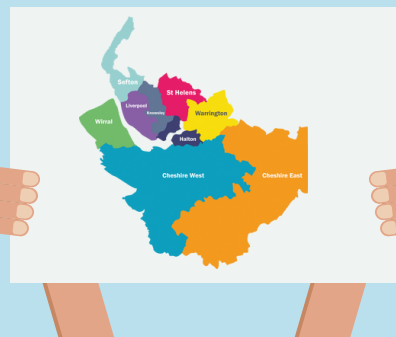


Improving Menopause care for Women across Cheshire and Merseyside

In March 2024 we told you all about our Menopause care pilot between Liverpool Womens and Liverpool Central PCN. This pilot was originally set up for three months, but was extended to six months – running to the end of September 2024.

We are excited to share with you some of the key achievements from this pilot and wanted to also announce that these additional clinics will continue after September 2024.

We are exploring opportunities to offer this service in other areas of Cheshire and Merseyside and look forward to announcing the next phase of this in the next few months.



Pilot objectives:

- Create community-based Menopause Clinics
- Liverpool Women's NHS Foundation Trust taking a lead role in developing Women's Health Hubs
- Standardise, and provide further access to Menopause Care
- Reduce Menopause Waiting Times and reduce Health Inequalities

128 At the end of August 2024, 128 Menopause appointment slots had been created as part of this pilot.

Since January 2024, waiting times to first Menopause appointment have reduced by 14%, of which 6% has been achieved as part of this pilot.

14%



Beyond the pilot, we are aiming for between 21 and 28 appointment slots available in central Liverpool; serving patients in postcodes L1, L2, L3, L4, L5, L7, and L8.

"I am so glad for this service and for getting the support I need."

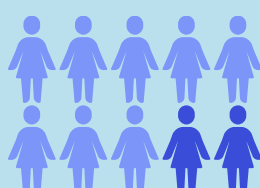
-Patient



In the month of August 2024, **76% of patients attending for their appointment provided feedback on their experience.**

80%

Over 80% of patients rated service as 'very good'



100%

of patients were happy with day and time of their appointment



"Menopause is having a big effect on my life... I feel I am talking to the right people."

-Patient



90%

of patients received appointment reminders

With patients being given 2-6 weeks notice for appointments



**CENTRAL LIVERPOOL
 PRIMARY CARE NETWORK**



Cheshire and Merseyside
 Acute and Specialist Trust Provider Collaborative