

The Women's View

A close-up portrait of a woman with long, dark, wavy hair and blue eyes, smiling warmly at the camera. She is wearing a dark top and a small hoop earring. The background is a blurred clinical setting with medical equipment and shelves.

Embryologist at The Hewitt Fertility Centre,
one of five in the UK accepted for PhD
Fellowship Programme

Also in this issue...

- New website tool ReachDeck
- Digi Care 12 month anniversary
- The Research Midwives Trailblazer Award winner

Welcome

Welcome to the latest edition of The Women's View. We are delighted to bring you another packed edition with lots of achievements to celebrate and many inspiring stories from our dedicated staff and community here at Liverpool Women's.

Firstly, I would like to say a big congratulations to our Digital Services and other teams across the Trust as this month marks one year since our electronic patient record (EPR) system digiCare went live. This was a significant project which involved many individuals and teams to get our EPR system right and has so far been a success for the Trust. The system continues to be optimised to further improve features and functionality for the benefit of patients and staff.

It was fantastic to learn that Mollie McGrane-Ewen, Clinical Embryologist at The Hewitt Fertility Centre, is one of only five people in the UK to have been accepted into a prestigious PhD Fellowship Programme. This is a significant achievement, and I would like to extend my congratulations to Mollie, well done. Read the full story on page 3.

In our continuous efforts to improve the patient experience, we have recently introduced the ReachDeck Toolbar to our website. ReachDeck is a speech, reading and translation support toolbar that will make navigating our online resources easier and more accessible for all our users. See page 4 for more information and take a look at our website: liverpoolwomens.nhs.uk

We are also delighted to celebrate the achievements of our Research Midwifery Team who won the *Midwifery Practice Team Trailblazer Award* at the recent Northern Maternity and Midwifery Festival Trailblazer Awards 2024 and one of our exceptional volunteers, Rezmin Islam who was named 'runner up' in the *Volunteer of the Year* award category at the annual *Our Health Heroes Awards*, see page 8.

Lastly, we are incredibly proud that our Early Pregnancy Assessment Unit team have been named as finalists in the *Nursing Times Awards 2024* for *Critical and Emergency Care Nursing*. Best of luck team! See page 10 for the full story.



James Sumner
Chief Executive Officer



Embryologist at The Hewitt Fertility Centre, one of five in the UK accepted for PhD Fellowship Programme

Mollie McGrane-Ewen, Clinical Embryologist at The Hewitt Fertility Centre, Knutsford has been accepted onto the *4Ward North PhD Fellowship Programme*. Only five people in the UK have been accepted onto this programme which aims to enhance the quality of clinical academic research training in northern England.

Becoming a 4Ward North PhD fellow is a prestigious marker of esteem for a future career combining research with clinical practice. The programme aims to identify how the duration of in-vitro culture affects the health and pregnancy potential of the human embryo.

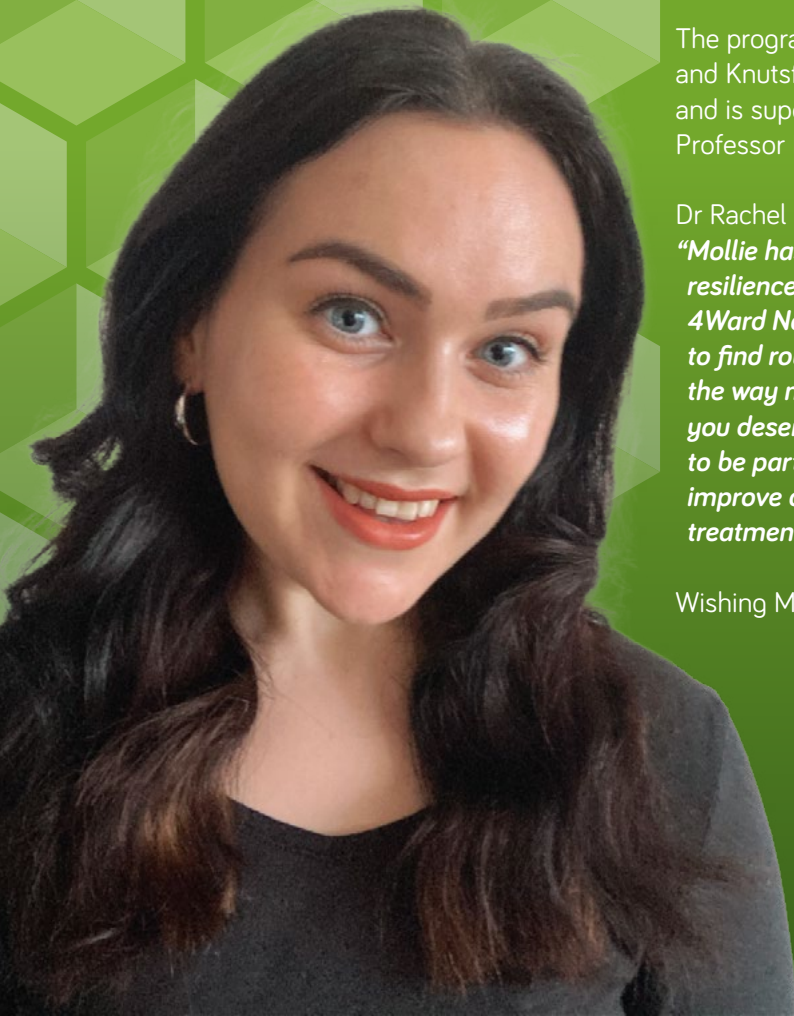
Mollie said:

“Within my specialism of Clinical Embryology, there is currently a real shortage of formal routes to clinical academia. As a result, there is a lack of experienced reproductive scientists who hold both clinical and academic positions. I am excited to complete the 4Ward North PhD fellowship and pave the way to clinical academia for reproductive clinical scientists.”

The programme is based across The Hewitt Fertility Centres, in Liverpool and Knutsford, The University of Manchester and Newcastle University and is supervised by Professor Daniel Brison, Dr Rachel Gregoire, Professor Roger Sturmey, Dr Peter Ruane and Professor Judith Rankin.

Dr Rachel Gregoire, Scientific Director at The Hewitt Fertility Centre said: *“Mollie has never given up on her dream, her determination and resilience has paid off and we are all so proud of her for achieving the 4Ward North PhD Fellowship. Reproductive scientists have struggled to find routes into clinical academia and we are sure Mollie will pave the way nationally for other reproductive scientists to follow. Mollie you deserve this, all of us at The Hewitt Fertility Centre are excited to be part of your research journey, helping our team and others to improve culture techniques, creating healthier embryos for our patients treatment.”*

Wishing Mollie the best of luck as she embarks on this new journey.



Making our website easier to use with the ReachDeck Toolbar

We're pleased to announce that we've added speech, reading and translation support to our website with ReachDeck. More specifically, the ReachDeck Toolbar.

ReachDeck is a tool from Texthelp. It helps us to make our online content more available to everyone. The ReachDeck Toolbar is one of three ways it does this. The ReachDeck Toolbar offers our visitors assistive features. Giving them a choice in how they access our online information.

But, why is this important?

Globally one-in-seven people have a disability. For many, they experience barriers when they're on the web. For example, people with visual impairments might struggle if information is only available in text format, and those with cognitive disabilities might find it difficult to read information on a crowded web page. This can impact their ability to browse, buy and access online content or services. What's more, only one-in-ten people in need have access to assistive technology. By adding the ReachDeck Toolbar, we're giving extra support to people that might need it most.

Our visitors can choose to have our content read out loud. They can remove distracting content, or add a screen tint with a reading pane to help them focus. They can translate our web pages into over 100 languages and much more.

Try it out for yourself

Can you see the blue launchpad on your screen? Click it to launch the ReachDeck Toolbar. To hear text read out loud, simply click on the first icon and hover your mouse over any text. From a touchscreen device you'll have to click on the text to hear it. Now, apply a screen tint by clicking on the eye icon. To explore more, click on the question mark (?) icon to discover what each feature on the toolbar does. ReachDeck Toolbar features including Text-to-Speech, Text Magnifier and Screen Mask.

ReachDeck supports our goal for the future

We want to do our part to create a digital world that's welcoming to everyone. As well as giving our visitors support tools, ReachDeck supports our goals by:

- Helping us to write content that's easier to understand. The ReachDeck Editor gives our staff a tool to make sure that what they write is simple and clear. It helps them to improve the readability of all their content.
- Helping us to discover accessibility problems quickly. The ReachDeck Auditor scans our site for technical WCAG errors and readability errors. So that we can fix and remove accessibility barriers with ease.

For more information on ReachDeck:

www.texthelp.com/products/reachdeck

[View here](#)

If you'd like to give feedback on ReachDeck, the team at Texthelp would love to hear from you.

Please note, Google Translate is the tool that is used to translate information on our website to other languages. Google Translate is a global tool that is not under Liverpool Women's control. Therefore whilst you may use Google Translate for useful simple translations, it should not be relied upon as a substitute for official translation services that are provided by the Trust.

Please take particular notice of this when you are using the translation feature for patient information that contains detailed clinical information. Speak to a member of staff when you visit the Trust if you require any translation support.



12 months since the implementation of our new Electronic Patient Record (EPR) System

July marks one year since the Trust transitioned to a new Electronic Patient Record System, digiCare, becoming the first in the UK to implement MEDITECH Expanse.

The legacy EPR system, MEDITECH Magic was implemented back in 1996 and no longer met the changing digital demands of the Trust. This was a huge change for all staff and a journey that continues today. The design, development, testing and implementation of the new system took over 2 years with a dedicated team working to ensure it met the clinical digital demands of the Trust. This involved staff and teams from all departments.

Matt Connor, Chief Digital Information Operating Officer at Liverpool Women's NHS Foundation Trust said:

"It's hard to believe we are already one year on into using MEDITECH Expanse and the significant amount of hard work that went into the transition and the work that continues within the digiCare programme. A lot has happened in the last 12 months with thanks to our talented digital team, Trust staff, MEDITECH and other partners. We recognise we are still early in our 'Optimisation Phase' of digiCare, with many improvements and listening events planned. Thank you to you all for your patience and continued support."

What has been done since?

During the last 12 months further changes have been made to better improve the system for staff and patient care. Further integration with other clinical systems for demographics, referrals, scheduling, consent forms and anaesthetic charts have been implemented, improvements in patient communication tools and increased information sharing with partner organisations and more streamlined clinical documentation to support our clinical teams.

Leigh Strong, Director, International Client Support and Implementation at MEDITECH said:

"MEDITECH is extremely proud of all the hard work and commitment that Liverpool Women's staff have put in to make our first NHS Expanse implementation such a success. After one year of collaboration, including both challenges and successes, we look back and see what a tremendous digital change has occurred at LWH that ultimately benefits the patients of the Trust. We look forward to continuing our partnership with Liverpool Women's and working collaboratively to further optimise the system utilisation for additional staff and patient benefits. Happy One Year Anniversary of the digiCare Programme's go-live!"



What do the next 12 months look like?

As with all systems digiCare continues to grow and improve, over the next 12 months the team, working with MEDITECH will rollout new and improved features. Some of which include, laboratory result integration, outpatient prescribing, increased information sharing with partner organisations and GP referral integration. Among others these will go to further support our staff and patients across the organisation.

Midwifery Practice Team Trailblazer

The Research Midwifery team at Liverpool Women's NHS Foundation Trust have won the Midwifery Practice Team Trailblazer Award at the recent Northern Maternity and Midwifery Festival Trailblazer Awards 2024.

The Research Midwifery team demonstrate incredible commitment to improving care for women and babies through successful clinical research delivery. They have successfully embedded clinical research into routine practice at Liverpool Women's. Through positive role modelling and leadership, the team engage midwives with their research role from the earliest timepoint in clinical training.

The team consistently and successfully recruit to research across the National Institute for Health and Care Research (NIHR) portfolio, this has recently been demonstrated by the team's hard work on the Genomics England **"Baby and Mum Sample Study"**. By engaging with maternity support workers and community midwives across the organisation, clinical staff were encouraged to complete Good Clinical Practice (GCP) training and join the delegation log.

The research midwifery team went above and beyond to ensure successful recruitment to this important study, undertaking a significant proportion of clinical "day 5" midwifery home visits to ensure all eligible women were approached to take part, demonstrating the ability to work flexibly to meet the needs of the clinical service and research studies.

Clinical staff who completed GCP training and assisted with recruitment for Baby and Mum Sample Study (BAMSS) reported that they had an increased understanding of clinical research procedures and had more confidence in integrating research into their future practice.

Louise Hardman, Head of RD&I at Liverpool Women's NHS Foundation Trust said:

"I am delighted for our research midwifery team in winning the Trailblazer Award. It is a credit to our fabulous team of research midwives and practitioners who work tirelessly for both pregnant women and also their colleagues. They are an asset to the organisation."

Several team members hold dual research and clinical roles, enhancing relationships in the clinical setting and allowing opportunities for positive role modelling. Staff are more confident to seek support from the Research Midwives, going some way to facilitate the 'conceptual leap' to embedding research into clinical practice.

To further embed research into clinical practice from the ground up, the team have developed a one-day placement for every third-year student midwife at LWH, increasing knowledge of delivery and conduct of clinical research and providing the opportunity to hold GCP certification upon qualification. They have also developed a bespoke elective placement for student midwives which has received very positive feedback.



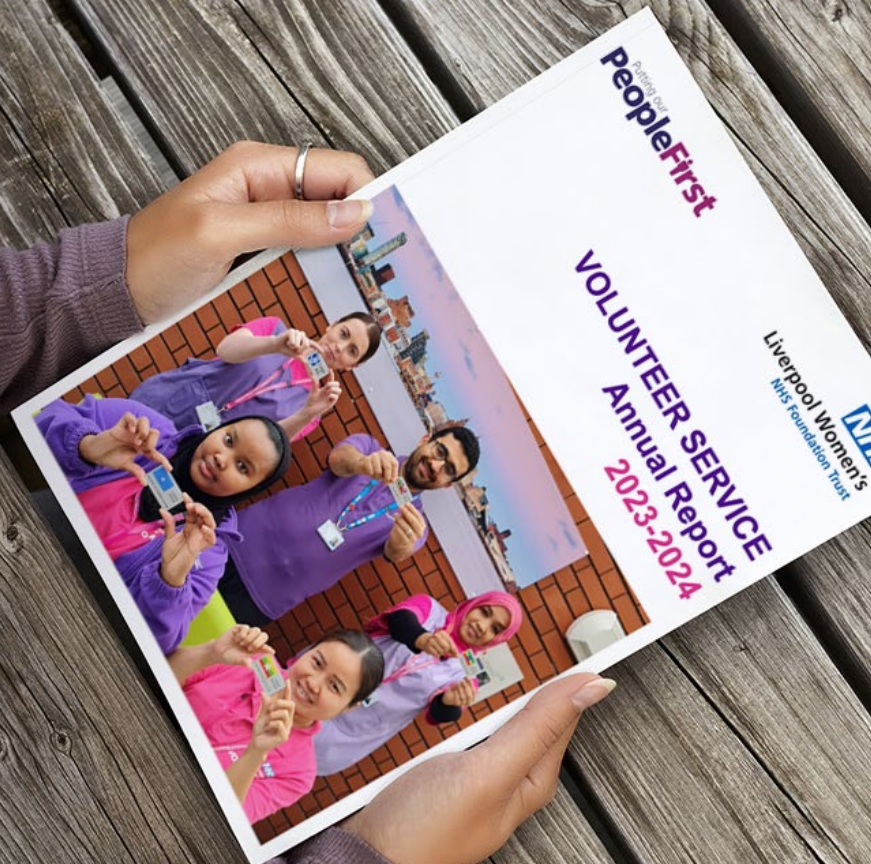
Liverpool Women's Volunteers Annual Report 2023–2024

It's been another bumper and eventful year for our Volunteer Service.

This year 112 new volunteers started in post and 181 volunteers contributed 14624 hours to supporting our women, patients, staff and visitors.

We have continued to grow and expand our services across the Trust. We currently offer 23 volunteering opportunities, four were newly introduced this year: Therapy Dogs, Lived Experience Panel Members, Maternity Base Bay in conjunction with the Volunteer to Career programme, and Koala NW.

The Volunteers supported numerous events and ad-hoc job requests, some of these included NHS75, Honeysuckle Christmas Grotto, MVP 15 steps and the Annual Baby Loss Remembrance Service. The full Annual Report is now available to read online.



[View here](#)



Honeysuckle FC Evaluation Report

We are delighted to bring you the Honeysuckle FC evaluation report published by LFC Foundation.

LFC Foundation is the official charity of Liverpool Football Club. Our Honeysuckle Team have been working closely with the LFC Foundation over the last few years and we are delighted to see the project go from strength to strength, helping so many people. The full report is now available.

[View here](#)

Liverpool women's hospital volunteer wins award in recognition of work with Bangaldeshi community

Rezmin Islam, a maternity volunteer at Liverpool Women's NHS Foundation Trust has been named runner up in the Volunteer of the Year Award category at the annual Our Health Heroes Awards.

Despite running her own online retail business and caring for her 3 children, Rezmin manages to volunteer twice a week in the Liverpool Women's Hospital Maternity and Gynaecology Service, supporting staff, patients and visitors.

Rezmin helps those who do not speak English as their first language to access hospital services, supporting them to understand the difference in practices between the NHS and their own cultures.

Speaking at a glittering awards ceremony in London accepting her award Rezmin said: *"I am so excited to win this award and I am so grateful to have been nominated."*

The Our Health Heroes Awards 2024 is delivered by Skills for Health and supported by NHS England, NHS Employers, NHS Shared Business Services, NHS Race and Health Observatory, SFJ Awards and Integrated Care Journal. More information is available online.

[View here](#)



OUR HEALTH
HEROES
AWARDS





Healthy Start scheme

Get help to buy food and milk



What is Healthy Start?

If you're more than 10 weeks pregnant or have a child under four, you may be entitled to get help to buy healthy food and milk.

If you're eligible, you'll be sent a Healthy Start card with money on it that you can use in some UK shops. We'll add your benefit onto this card every four weeks.

You can use your card to buy:

- Plain liquid cow's milk
- Fresh, frozen, and tinned fruit and vegetables
- Fresh, dried, and tinned pulses
- Infant formula milk based on cow's milk

You can also use your card to collect:

- Healthy Start vitamins – these support you during pregnancy and breastfeeding
- Vitamin drops for babies and young children – suitable from birth to four years old

Find out more in this short film.

[View here](#) 



Nursing Times Awards 2024

Nursing Times Awards 2024 Shortlist

Liverpool Women's NHS Foundation Trust are delighted to receive the news that the Early Pregnancy Assessment Unit (EPAU) Team are finalists in the 2024 Nursing Times Award for Critical and Emergency Care Nursing.

The Early pregnancy Assessment Unit (EPAU) provides nurse led outpatient care to women with problems or concerns in early pregnancy between 6 and 12 weeks. Prior to Autumn 2023 the team worked as a self-contained unit within the Gynaecology Emergency Room, using only two scan rooms making them limited to what they could provide to patients, especially regarding management of miscarriage.

In 2021 the team began to think about ways they could improve the service for patients, this included more space, to have their own dedicated unit, to provide privacy for patients and a separate waiting area to the emergency room. All of which were echoed by feedback from patients.

In 2022 discussions began again regarding the move and following collaboration with senior nursing staff, senior medical staff, and the Bedford team the EPAU move was back on the cards.

Following the release of the pregnancy loss review in July 2023 the team utilised the findings alongside patient feedback to finally steer the journey of improving the service with it becoming its own separate unit located on the second floor of the hospital.

They now have their own waiting area for patients creating a better environment and more space to be able to offer miscarriage management.

Rebecca Holland, Deputy Head of Nursing – Gynaecology at Liverpool Women's NHS Foundation Trust said:

"I am so proud of the team and the dedication they have shown to our improvement journey for early pregnancy, they didn't give up for their patients and continue to look into ways they can make further changes – well done to you all."

The team continue to make changes and have plans in the future to improve the service by creating miscarriage management clinics, telephone clinics and to increase the scan service.

Details on how you can access EPAU and the monthly facts visit the Liverpool Women's website.

[View here](#)



Charity Update



Merseyside Woman of the Year 2024

LWH Charity had the pleasure of nominating Jen Deeney for Merseyside Woman of the Year 2024.

Jen got through to the final of this prestigious annual event and the judging panel were inspired by Jen's work on the Neonatal Unit. Thank you to everyone who voted for Jen.

Pram Push 2024

A huge thank you to everyone big and small who took part in Liverpool Women's Hospital Charity Pram Push in May 2024.

Together we raised over £8.5k for current and future families staying on the Neonatal unit. It was a pleasure to partner with Otterspool Adventure and thank you to our lead sponsor Mamafit, look out for details on the 2025 event.



Charity Update



Sutcliffe's Charity Ball

LWH Charity was chosen to be one of the beneficiaries of Sutcliffe's Charity Ball.

An astounding £32.5k was raised for LWH Neonatal unit to purchase a new giraffe incubator. It was wonderful evening celebrating making a difference in the Liverpool Region.



Yorkshire Three Peaks

29 June 2024 saw teams from Jaguar Land Rover, Legal for Landlords and the University of Liverpool take on the epic Yorkshire Three Peaks challenge.

The 32 participants braved hail and torrential rain to make it to the top of not only one but three peaks. Huge congratulations to everyone and thank you to the teams who have raised wonderful £14,000 for LWH Charity.

We would also like to say thank you to our trek provider BIG WORLD treks, Ray and the team, Costco for providing much needed snacks and LWH Transport team for making the shuttle bus available so we could use it as a support vehicle to meet our adventurers after each peak.

Neonatal Food pilot



LWH Charity has been awarded £5k from Sophie's Legacy – a charity working with NHS England to ensure families whose babies/children are inpatients are provided with a hot wholesome meal.

The Neonatal unit is piloting the scheme from 24 June until 22 July 2024 with support from Sophie's Legacy and Charity TEAM 1C.





It's back!

6pm on Saturday 23 November 2024
At the wonderful Titanic Hotel, Liverpool

We expect this year to be bigger and better than ever and we'll again be raising funds for our Honeysuckle Service bereavement suite appeal.

Black tie event with drinks reception and three-course meal
Single ticket: £70 • Table ticket: £700

Email: fundraising@wh.nhs.uk for tickets and more information



Give someone the ultimate gift

Become an egg donor

Many people going through fertility treatment rely on egg donors to help achieve their dream of making a family.

We currently have a shortage of egg donors - could you help one of our patients?

Visit our website to enquire about registering as a donor or please contact us if you would like further information.

Tel: 0151 702 4385

Email: lwft.donorbank@nhs.net

www.liverpoolwomens.nhs.uk/donor



JOIN US

MULTIPLE PREGNANCY TEAM VIRTUAL MEET AND GREAT

Grab a cuppa and meet the team who will be caring for you and your babies during pregnancy.

The team will go through what to expect during your pregnancy and answer any questions you may have.

Scan the QR code for the meeting link

