

January 2022 – Maternity Facts.

Thank you to all our families for choosing Liverpool Women's : Welcome to the world our January 2022 Babies.

658



Total Births

13

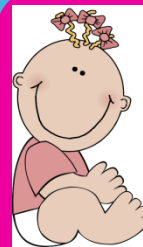


Vaginal Birth After CS



14

Home Births



Girls

331

347

Boys



1,227

Visits to Maternity Assessment Unit



7

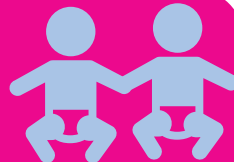
Breech Births



Spontaneous Vaginal Births

326

9



Sets of Twins

Women Booked For Care



679



94

Elective C - Sections

148

Emergency C - Sections



Have you had a January 2022 Baby? Why not send a picture to our Twitter or Facebook account. We'd love to hear from you. @LiverpoolWomens

Births on MLU



79

Instrumental Births



84

Discharges from NICU

106



29
Pool Births



Heaviest Baby 12lb 3oz
Lightest Baby 1lb 6oz



First 2022 Baby Born at 02.08 am.

Our busiest days: 26th and 28th January - 28 Births.