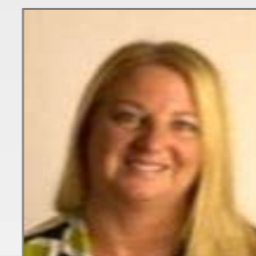


# Board of Directors



Robert Clarke  
Chair



Kathryn Thomson  
Chief Executive

## Non-Executive Directors

## Executive Directors



Ian Knight  
Non-Executive  
Director



Susan Milner  
Non-Executive  
Director



Jo Moore  
Non-Executive  
Director and  
Vice Chair



Tony Okotie  
Non-Executive  
Director and Snr  
Independent  
Director

Louise Kenny  
Non-Executive  
Director



Tracy Ellery  
Non-Executive  
Director



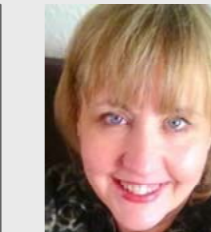
Phil Huggon  
Non-Executive  
Director



Jenny Hannon  
Director of  
Finance



Devender Roberts  
Acting Medical  
Director



Michelle Turner  
Director of Workforce  
and Marketing &  
Deputy Chief  
Executive

Caron Lappin  
Director of Nursing  
and Midwifery



Loraine Turner  
Interim Director  
of  
Operations

### Senior Management Corporate

### Division of Family Health

### Division of Gynaecology

### Division of Clinical Support Services

Colin Reid  
Trust Secretary



Tim Neal  
Corporate DIPC

Janet Brennan  
Deputy Dir  
Nursing & Midwifery



David Walliker  
Chief Information  
Officer



Andrew Duggan  
Head of  
Communications



Eva Horgan  
Deputy Director of  
Finance



Amanda McDonough  
Associate Director of  
Safeguarding Children  
and Adults



Chris Lube  
Head of Governance

Maternity -- Neonatal



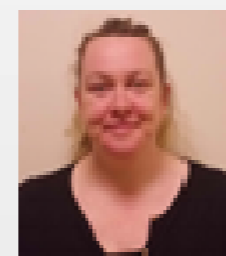
Mark Clement-Jones  
Clinical Director



Chris Dewhurst  
Clinical Director



Nicola Murdoch  
Divisional Manager



Clare Fitzpatrick  
Head of Midwifery



Jennifer Deeney  
Head of Nursing

Hewitt Fertility -- Gynaecology Centre



Andrew Drakeley  
Clinical Director



Dan Nash  
Divisional Manager

Melanie Pickering  
Head of Nursing

Genetics -- Clinical Support -- Theatres



Emma McCann  
Clinical Director



AnnMarie Ratcliffe  
Divisional Manger



Rakesh Parikh  
Clinical Director



Nikki Maggs  
Head of Nursing

Vacant  
Deputy Director of  
Workforce