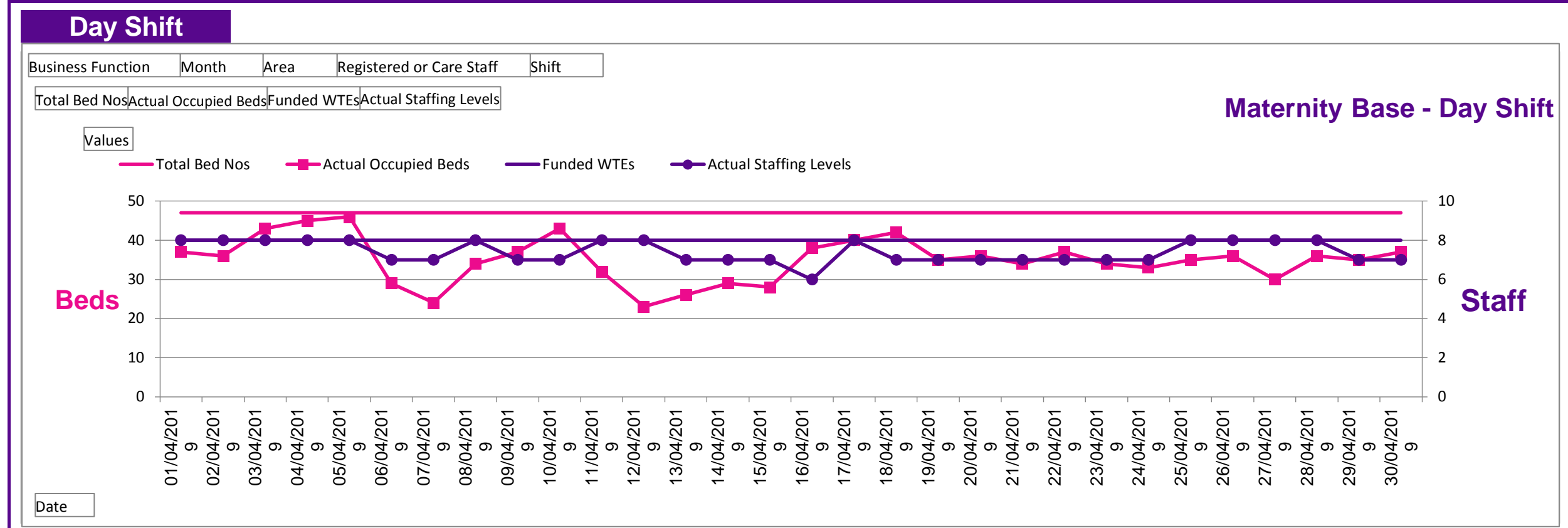


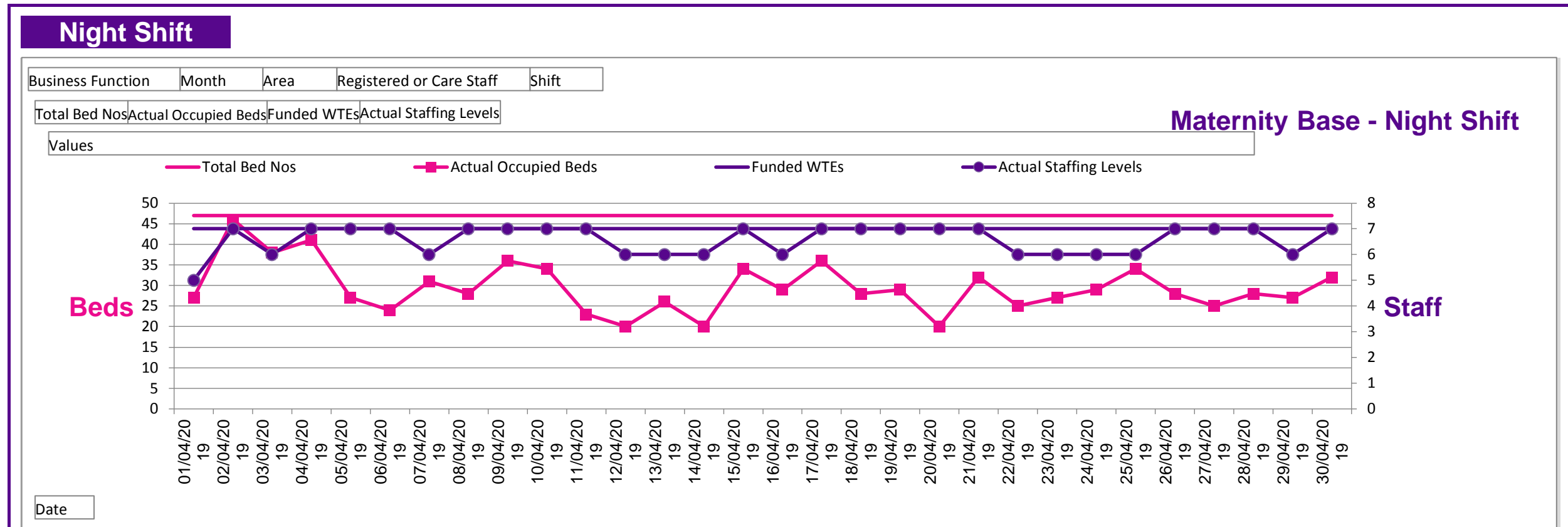
Staffing Report - Maternity Base April-2019 Last updated: 10/05/2019 at 12:48

Funded WTE	Registered	39.7	Current WTE	Registered	30.22	Number of shifts lost to Sickness Absence	Registered	29
	Unregistered	18.5		Unregistered	18.4		Unregistered	54
	Total	58.20		Total	48.62		Total	83.00



Narrative

The maternity bed occupancy and staffing levels are monitored closely over a 24 hour period. Staff rosters are published 6 weeks in advance, giving the manager time to flex or use bank staff as required. Staffing has been below expected levels in April, this has been due to vacancy and sick leave. The activity and staffing is monitored 4 hourly by the maternity bleep holder and staff moved to cover areas when required. There has been a recent recruitment of staff and they will be commencing once all pre-employment checks have been completed.



Narrative

The maternity bed occupancy and staffing levels are monitored closely over a 24 hour period. Staff rosters are published 6 weeks in advance, giving the manager time to flex or use bank staff as required. Staffing has been below expected levels in April, this has been due to vacancy and sick leave. The activity and staffing is monitored 4 hourly by the maternity bleep holder and staff moved to cover areas when required. There has been a recent recruitment of staff and they will be commencing once all pre-employment checks have been completed.

Staffing Concerns

Although there have been instances during the month where staffing levels have not met agreed levels, due to vacancy and staff sickness, the bed occupancy has been reduced and safety has been maintained

Number of shifts where staffing levels are not compliant with planned levels

Number of staffing related concerns escalated to Matron or higher

Ward Manager's Statement

Maintaining safe staffing levels on the maternity ward is complex due to the unpredictable nature of labour and admissions to the ward. There are approximately 20 admissions and 20 discharges in every 24 hour period. The ward also cares for complex antenatal admissions, some of whom are long stay.

A senior midwife reviews the staffing levels every 4 hour across the unit to ensure that safety is maintained at all times. midwives are redeployed to areas with greatest need. There have been no safety issues relating to staffing this month.

Signed **Date**

Key

Beds Total	The total number of beds allocated or available to the ward
Beds Occupied	Of the total beds, the number that have a patient in the bed
WTE Funded	WTE stands for Whole Time Equivalent. Funded WTE is the number of staff that is planned to be on a shift at any one time.
WTE Actual	Of the Funded WTE, the actual staffing level for the shift.
Registered	A Registered Nurse is one whom has qualified to practice as a nurse and is registered as such with the Royal college of Nursing or Royal College of Midwives
Unregistered	Unregistered staff are care staff that assist nurses with the day to day care of patients