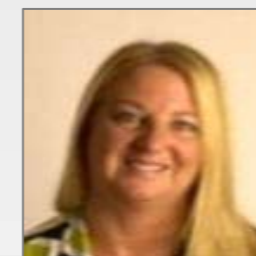


Board of Directors



Robert Clarke
Chair



Kathryn Thomson
Chief Executive

Non-Executive Directors

Executive Directors



Ian Knight
Non-Executive
Director



Susan Milner
Non-Executive
Director



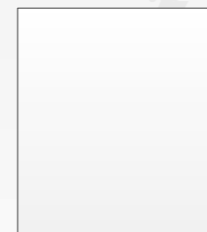
Jo Moore
Non-Executive
Director and
Vice Chair



Tony Okotie
Non-Executive
Director and Snr
Independent
Director



Louise Kenny
Non-Executive
Director



Tracy Ellery
Non-Executive
Director



Phil Huggon
Non-Executive
Director



Jenny Hannon
Director of
Finance



Devender Roberts
Acting Medical
Director



Michelle Turner
Director of Workforce
and Marketing &
Deputy Chief
Executive



Caron Lappin
Director of Nursing
and Midwifery

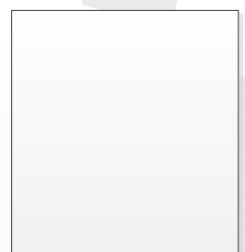


Loraine Turner
Interim Director
of
Operations

Senior Management Corporate



Colin Reid
Trust Secretary



Acting
Deputy Medical
Director

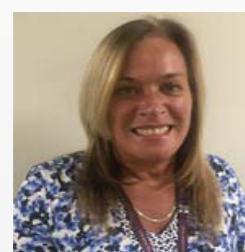
Janet Brennan
Deputy Dir
Nursing & Midwifery



Eva Horgan
Deputy Director of
Finance



Susan Westbury
Deputy Director of
Workforce



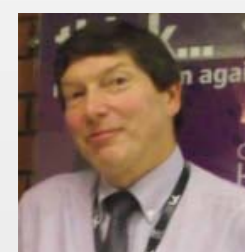
Cath Barton
General Manager



David Walliker
Chief Information
Officer



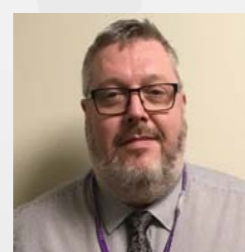
Amanda McDonough
Associate Director of
Safeguarding Children
and Adults



Tim Neal
Corporate DIPC



Andrew Duggan
Head of
Communications



Chris Lube
Head of Governance

Division of Family Health

Maternity -- Neonatal



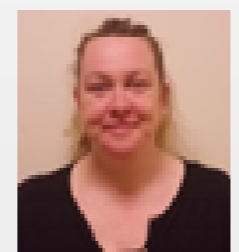
Mark Clement-Jones
Clinical Director



Chris Dewhurst
Clinical Director



Nicola Murdoch
Divisional Manager



Clare Fitzpatrick
Head of Midwifery



Jennifer Deeney
Head of Nursing

Division of Gynaecology

Hewitt Fertility Centre -- Gynaecology



Andrew Drakeley
Clinical Director



Dan Nash
Divisional Manager

Melanie Pickering
Head of Nursing

Division of Clinical Support Services

Genetics -- Clinical Support -- Theatres



Emma McCann
Clinical Director



Rakesh Parikh
Clinical Director



AnnMarie Ratcliffe
Divisional Manger



Nikki Maggs
Head of Nursing