

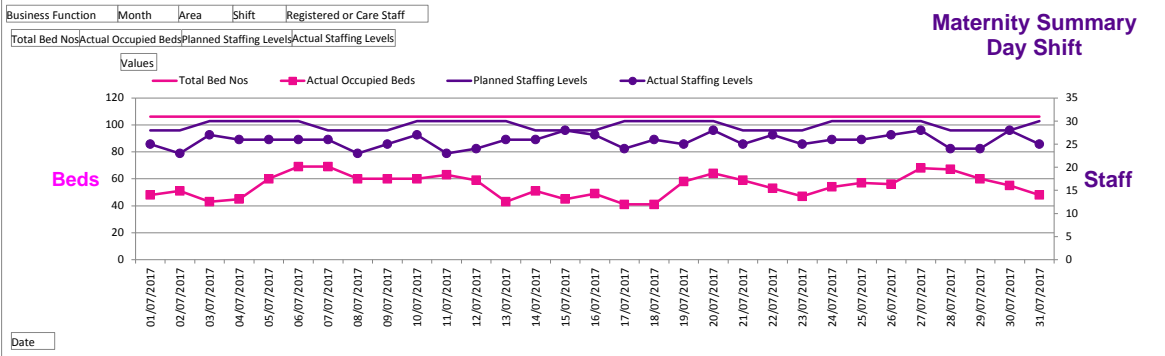
Staffing Report - Maternity (all Areas)

July-2017

Last updated: 11/08/2017 at 09:17

Funded WTE	Registered	165.30	Current WTE	Registered	144.23	Number of shifts lost to Sickness Absence	Registered	148
	Unregistered	47.60		Unregistered	39.33		Unregistered	45
	Total	212.90		Total	183.56		Total	193

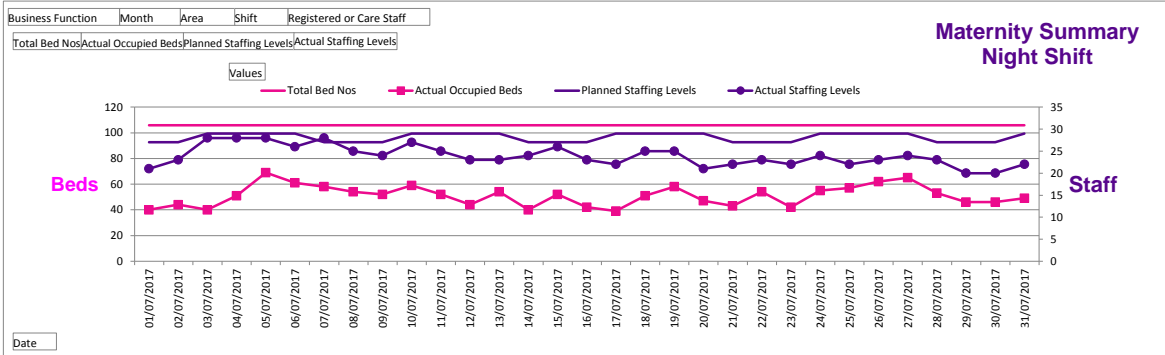
Day Shift



Narrative

Staffing numbers have been lower across the month of July in all areas however assessment of the staffing and bed occupancy together with acuity across the clinical areas is made on a four hourly basis and in between if required, this allows for staff to be moved across clinical areas where the need is greatest.

Night Shift



Narrative

Actual staffing levels on night duty during the month of July were lower than the planned levels due to sickness and vacancy, the numbers were increased by uptake of bank and the movement of staff between day and night shifts. Whilst taking into account the acuity of the patient the lower occupancy also contributed to ensuring the provision of safe service.

Staffing Concerns

Number of shifts where staffing levels are not compliant with planned levels	84
Number of staffing related concerns escalated to Matron or higher	1

Ward Manager's Assurance Statement

The staffing levels across the month of July were lower than the the planned staffing levels due to vacancy and sickness. The occupancy levels were also lower across the month and the actual staffing levels met the needs of the service provided to women and babies. The new bank initiative has resulted in an increase in staff prepared to work bank shifts which has assisted in filling the shortfalls. Community midwifery and antenatal clinic staff have also supported the inpatient areas. Acuity tools in the intrapartum areas are used to assess patient dependency and staffing availability. recent recruitment has resulted in a number of midwives been employed and due to start in September

Signed **J Butters** Date **10/08/2017**

Key

Beds Total	The total number of beds allocated or available to the ward
Beds Occupied	Of the total beds, the number that have a patient in the bed
WTE Funded	WTE stands for Whole Time Equivalent. Funded WTE is the number of staff that is planned to be on a shift at any one time.
WTE Actual	Of the Funded WTE, the actual staffing level for the shift.
Registered	A Registered Nurse is one whom has qualified to practice as a nurse and is registered as such with the Royal college of Nursing or Royal College of Midwives
Unregistered	Unregistered staff are care staff that assist nurses with the day to day care of patients