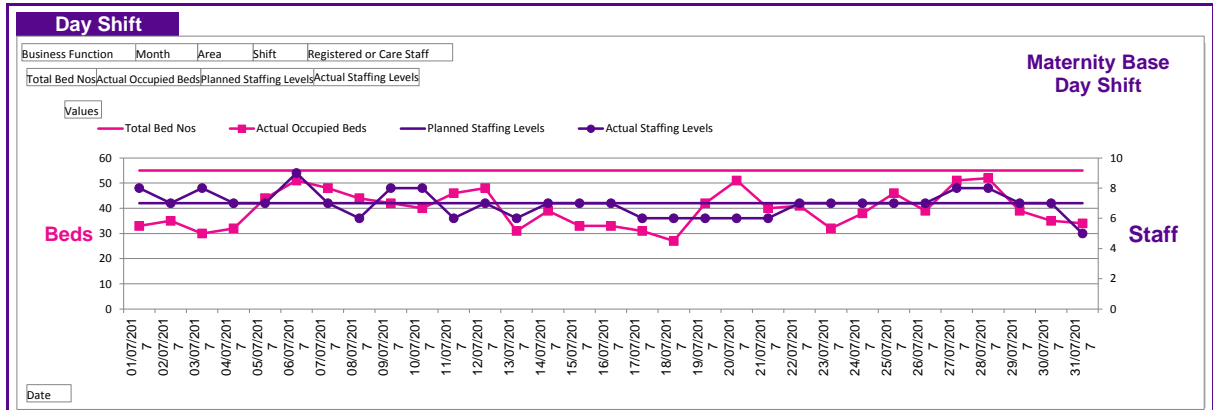


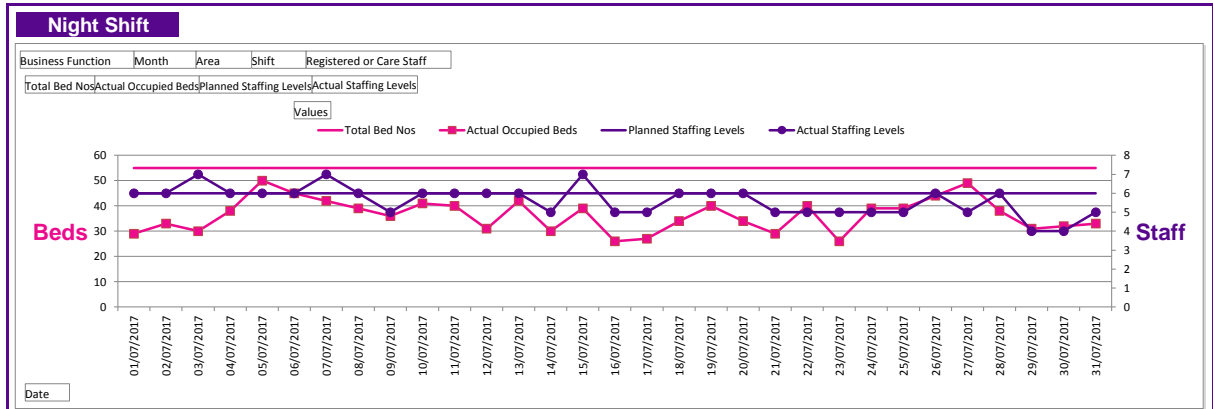
Staffing Report - Maternity Base July-2017 Last updated: 10/08/2017 at 14:29

Funded WTE	Registered	44.4	Current WTE	Registered	36.4	Number of shifts lost to Sickness Absence	Registered	22
	Unregistered	20.9		Unregistered	18.5		Unregistered	11
	Total	65.30		Total	54.90		Total	33



Narrative

Maternity base is a high risk, mixed antenatal and postnatal ward. The ward also has a Transitional Care facility for mothers with babies who have additional care needs. Women and their babies receive care from the multidisciplinary team. There is an escalation policy within the Trust which supports rotation of midwives and support staff through the maternity services. Staff are deployed from other areas when additional staffing is required.



Narrative

Maternity Base is a high risk, mixed antenatal and postnatal ward. The ward also has a Transitional Care facility for the mothers with babies who have additional care needs. Women and their babies receive care from the multidisciplinary team. There is an escalation policy within the Trust which supports the rotation of midwives and support staff through the maternity services. Staff are deployed from other areas when additional staffing is required.

Staffing Concerns

there were 21 occasions when staffing levels were not as planned, this was due to vacancy and sickness, there was no impact

Number of shifts where staffing levels are not compliant with planned levels	21
Number of staffing related concerns escalated to Matron or higher	0

Ward Manager's Statement

Maintaining safe staffing levels on maternity base is complex due to the unpredictable nature of labour and admissions to the unit. A senior midwife reviews the staffing levels every 4 hours across the unit to ensure that safety is maintained at all times. Midwives are redeployed to areas with greatest need when necessary. The ward manager has worked clinically to support the area when staffing levels are reduced and bed occupancy is high. There have been no safety incidents related to staffing in this month

Signed: Sarah McGrath Date: 04/08/2017

Key

Beds Total	The total number of beds allocated or available to the ward
Beds Occupied	Of the total beds, the number that have a patient in the bed
WTE Funded	WTE stands for Whole Time Equivalent. Funded WTE is the number of staff that is planned to be on a shift at any one time.
WTE Actual	Of the Funded WTE, the actual staffing level for the shift.
Registered	A Registered Nurse is one whom has qualified to practice as a nurse and is registered as such with the Royal college of Nursing or Royal College of Midwives
Unregistered	Unregistered staff are care staff that assist nurses with the day to day care of patients