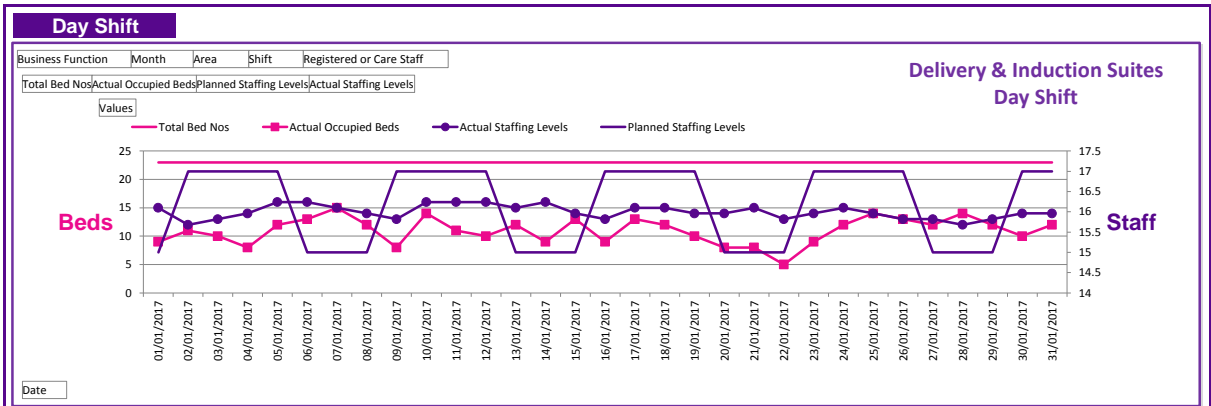


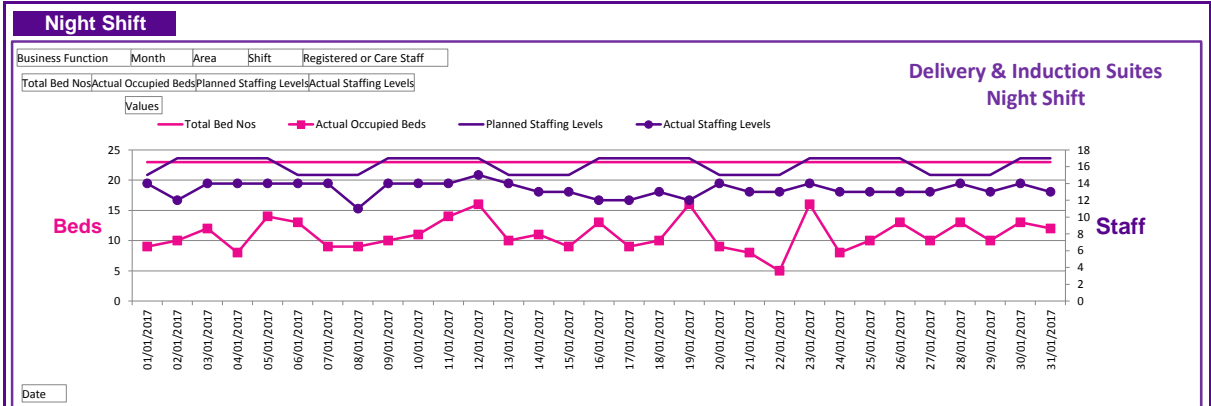
**Staffing Report - Delivery & Induction January-2017** Last updated: 20/02/2017 at 16:03

<b>Funded WTE</b>	<b>Registered</b>	82.1	<b>Current WTE</b>	<b>Registered</b>	69.85	<b>Number of shifts lost to Sickness Absence</b>	<b>Registered</b>	34
	<b>Unregistered</b>	15.9		<b>Unregistered</b>	13.04		<b>Unregistered</b>	17
	<b>Total</b>	98.00		<b>Total</b>	82.89		<b>Total</b>	51



**Narrative**

Delivery Suite is where women receive care from a multi-disciplinary team due to recognised complexities. Women who require high dependency care are also cared for in this area. There is an escalation policy in place on the occasions where additional midwives are required, these midwives are then deployed from other areas.



**Narrative**

Delivery Suite is where women receive care from a multi-disciplinary team due to recognised complexities. Women who require high dependency care are also cared for in this area. There is an escalation policy in place on the occasions where additional midwives are required, these midwives are then deployed from other areas.

**Staffing Concerns**

Although the actual staffing levels have been below the established staffing levels on 45 occasions. The actual ward activity has been less than the required staffing and therefore only require escalation to a matron on 2 occasions. Ward managers meet daily to review staffing levels and bank is requested when required

<b>Number of shifts where staffing levels are not compliant with planned levels</b>	<b>45</b>
<b>Number of staffing related concerns escalated to Matron or higher</b>	<b>2</b>

**Ward Manager's Assurance Statement**

Maintaining safe staffing levels on delivery suite is complex due to the unpredictable nature of labour and admissions to the unit. A senior midwife reviews the staffing and acuity on this area every 2 hours. Midwives are redeployed to this area as and when necessary recognising that this is the highest clinical priority. Throughout the month there were no incidents or complaints relating to staffing in this area. The ward manager has worked clinically and staff have been redeployed from other areas if acuity exceeds the staffing ratio. When staffing levels fall below required level, this is offered to bank staff in order to maintain safety levels. Delivery suite staffing also include staffing for the induction suite, when the work load increases in the induction suite midwives from delivery suite will be redeployed to the induction suite. The staffing for induction suite will be removed from the delivery suite establishment to reflect the true staffing on delivery suite.

Signed: **J Holloway** Date: **20/02/2017**

**Key**

Beds Total	The total number of beds allocated or available to the ward
Beds Occupied	Of the total beds, the number that have a patient in the bed
WTE Funded	WTE stands for Whole Time Equivalent. Funded WTE is the number of staff that is planned to be on a shift at any one time.
WTE Actual	Of the Funded WTE, the actual staffing level for the shift.
Registered	A Registered Nurse is one whom has qualified to practice as a nurse and is registered as such with the Royal college of Nursing or Royal College of Midwives
Unregistered	Unregistered staff are care staff that assist nurses with the day to day care of patients