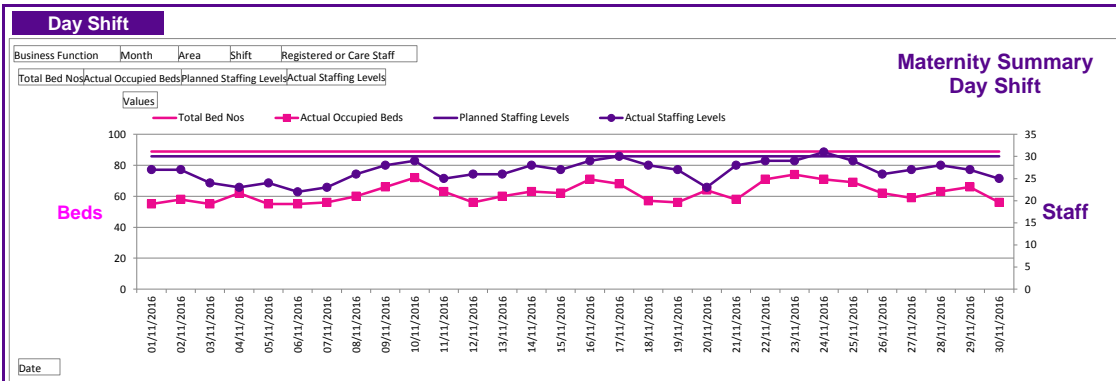


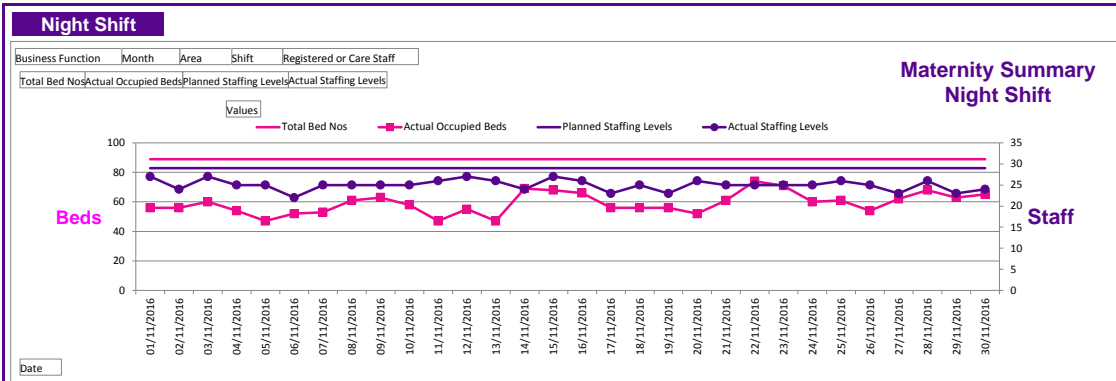
Staffing Report - Maternity (all Areas) November-2016 Last updated: 13/12/2016 at 14:13

Funded WTE	Registered		Current WTE	Registered		Number of shifts lost to Sickness Absence	Registered	
	Unregistered			Unregistered			Unregistered	
	Total	0.00		Total	0.00		Total	0



Narrative

Staffing is at times below the expected staffing, however staff are redeployed to areas of increased activity to support patient demand and acuity. The off duty is formulated 6 weeks in advance, this enables staffing levels to be reviewed by the Ward manager and changes made where required to achieve the agreed staffing levels. Short term sickness can influence this on a day to day basic, but with redeployment of staff, and ward managers supporting the clinical environment supports in times of heightened and increased activity



Narrative

Staffing Concerns

Number of shifts where staffing levels are not compliant with planned levels	
Number of staffing related concerns escalated to Matron or higher	0

Ward Manager's Assurance Statement

The maternity unit activity and staffing is reviewed frequently throughout the day and staff are redeployed to areas with increased demand. The off duty is formatted 6 weeks in advance, this allows for the roster to be reviewed in a timely manner. The electronic roster allows the ward managers to use the roster analyser, to ensure late shifts, weekend and night shifts are covered first. The 104 system has been reviewed and is now covered by the senior midwifery team, out of hours, which enables the delivery suite shift coordinator who out of ours takes the bleep to focus specifically on clinical issues. This review supports a over view of all areas to coordinate staffing in a managed way, supporting patient safety.

Signed: Date:

Key

Beds Total	The total number of beds allocated or available to the ward
Beds Occupied	Of the total beds, the number that have a patient in the bed
WTE Funded	WTE stands for Whole Time Equivalent. Funded WTE is the number of staff that is planned to be on a shift at any one time.
WTE Actual	Of the Funded WTE, the actual staffing level for the shift.
Registered	A Registered Nurse is one whom has qualified to practice as a nurse and is registered as such with the Royal college of Nursing or Royal College of Midwives
Unregistered	Unregistered staff are care staff that assist nurses with the day to day care of patients